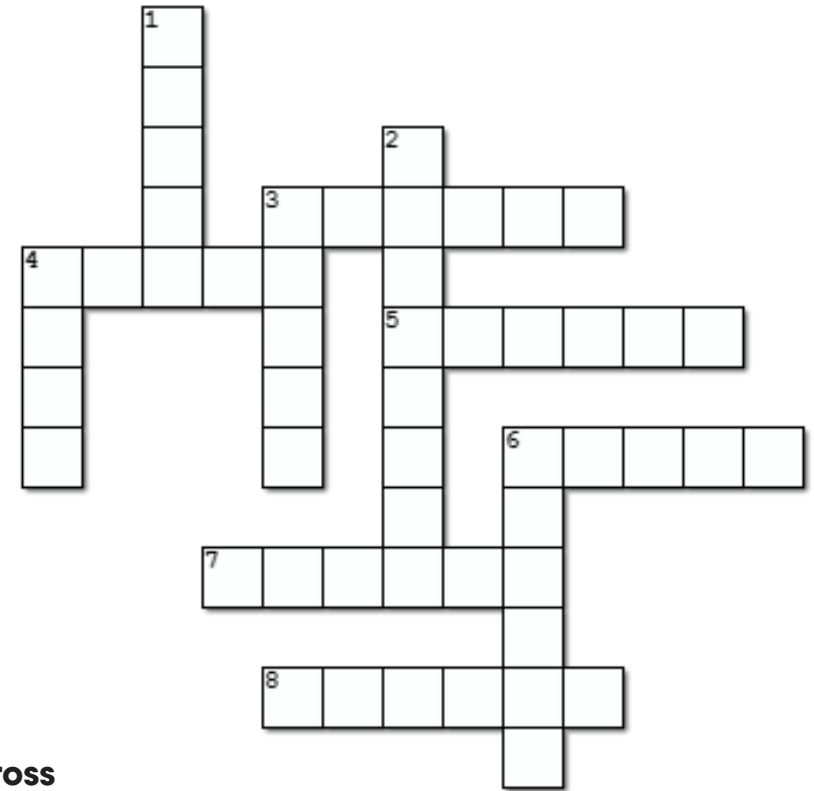
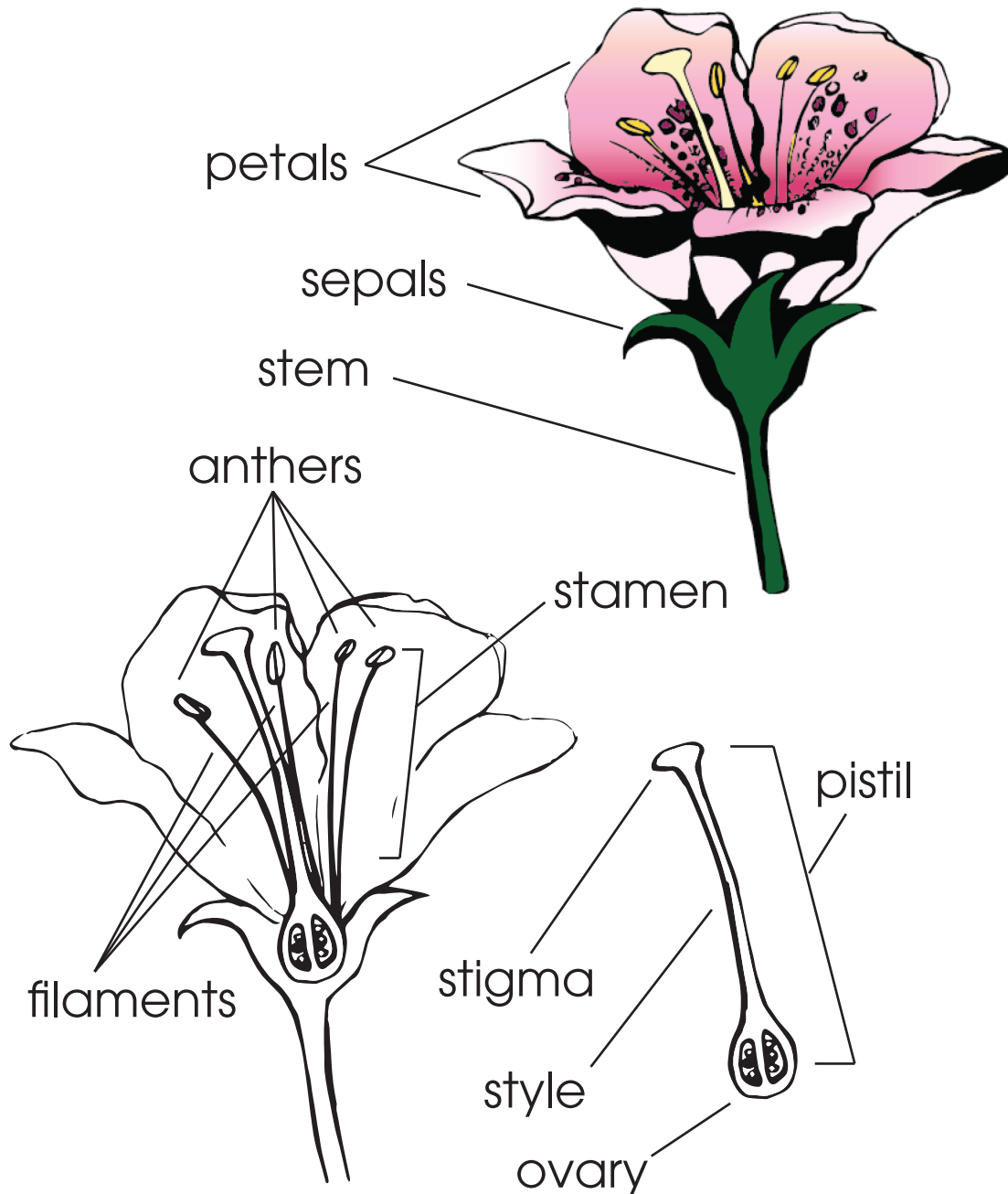


PARTS OF A FLOWER

Use the diagram and the clues to remember your new knowledge about flower parts! Write the names of all the parts in the grid.



Across

- 3. The sticky bit on top of the style that receives pollen.
- 4. The different stick in the centre of the flower, with the stigma on the end.
- 5. A small grain on the end of a filament that holds pollen.
- 6. A colourful part that attracts insects.
- 7. This word is for the structure that the stigma and style make up together.
- 8. The anther and the filament together make a s_____.

Down

- 1. This is where new seeds are made.
- 2. A long thin stalk that has an anther on the end.
- 3. The tough, green shields that surround the petals.
- 4. The long, strong part that attaches the flower to the plant.
- 6. The yellow dust that fertilises new seeds.